

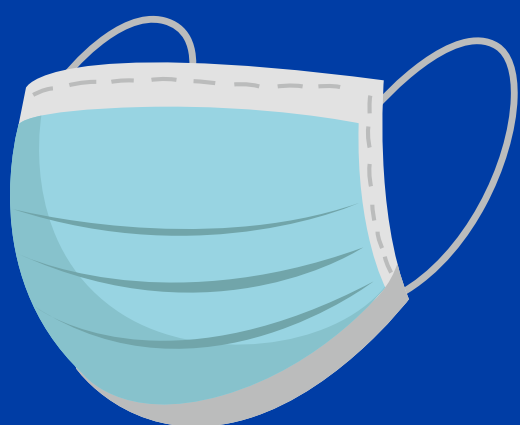


**HELP US PROVIDE ESSENTIAL ITEMS TO OUR CLIENTS**  
**HERE IS WHAT WE'RE LOOKING FOR:**



**GIFT CARDS**

Help us to provide clients with dignity as they navigate homelessness, trauma and now COVID-19 pandemic. All clients have been impacted economically by these crises need our support. Accepting VISA and Amazon gift cards in \$25 increments.



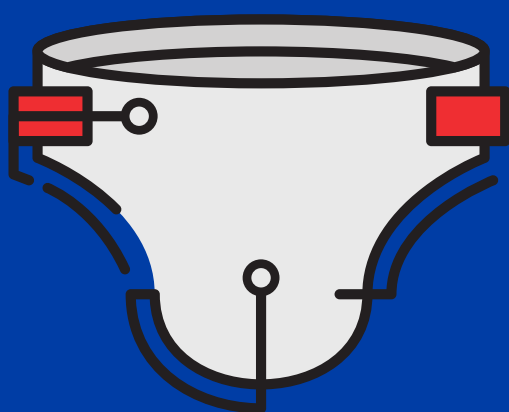
**FACE MASKS**

Heading Home houses nearly 1,500 people and operates with about 50 front-line essential care staff. By providing reusable face masks, you can help us ensure their health and safety while living or working in shelter. CDC guidelines for mask-making and use can be found [here](#).



**SCHOOL SUPPLIES**

Parents are struggling to home school their children in shelter, and a number of Heading Home clients have children with special needs. Help us provide them with essential school supplies like paper, notebooks, pencils, creative supplies and [more](#).



**OTHER BASIC SUPPLIES**

Items in high-demand also include diapers and wipes (both adult and baby), cleaning supplies, paper towels, tissues, toilet paper, immune boosters like Emergen-C, hygiene and feminine products. See our [Amazon Wish List](#) for more.

**ALL DONATIONS CAN BE SHIPPED OR DELIVERED TO HEADING HOME**  
**529 MAIN STREET | SUITE 100**  
**CHARLESTOWN, MA 02129**

*Deliveries are accepted on Wednesdays **only**, between 9:00 AM-5:00 PM*

*If you are interested in making a donation, please contact Carli Baldwin at [cbaldwin@headinghomeinc.org](mailto:cbaldwin@headinghomeinc.org)*